



# IntellinX

## Business Activity Monitoring for Legacy Applications

### What is INTELLINX?

INTELLINX is an intelligent business activity monitoring solution for legacy applications. With INTELLINX, you can easily and efficiently monitor **actual** activity of all legacy applications in **real-time** and produce reports and alerts.

### What are the business benefits gained when employing INTELLINX?

With INTELLINX, you can increase your responsiveness to problems and improve performance and availability of your legacy business services. Based on pre-defined rules, INTELLINX translates monitored data into meaningful business indicators, thus enabling you to quickly:

#### Performance and Availability

Discover causes of and alert about application slowdowns, failures, and outages. Assure availability of critical applications at all times. Produce statistics and facilitate convenient capacity planning.

#### Fraud Detection

Detect fraud and other malicious activity when performed in your systems.

#### Security

Enforce your corporate security policies by detecting security bridges and exceptions.

#### Service Levels

Manage, enable, and optimize service levels at an enterprise scale by constantly measuring response times and performance indicators.

#### Proper Use and Usability

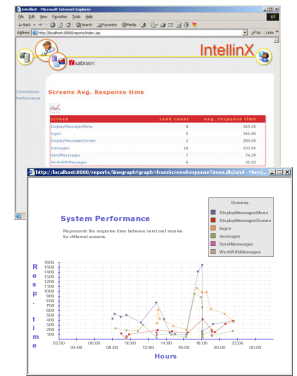
Assure proper use of applications. Measure and increase usability of applications by different users and user groups.

#### Auditing

Trace and archive transactions activity for future inquiries. Especially important for compliance with industry regulations such as the **Sarbanes-Oxley Act of 2002**.

#### Impact Analysis and Problem Determination

Alert about problems and changes in applications and understand their impact on different business services and users.



### Why INTELLINX?

#### Any Legacy Application

While other solutions are limited to the monitoring of certain commercial packages only, **INTELLINX** monitors all legacy applications, home-made as well as commercial, regardless of platform, environment, programming language, or interface. Monitored environments can include, for example, CICS transactions, 3270, 5250, IBM Mainframes, iSeries Servers, and others.

#### Real-time Monitoring of Actual Activity

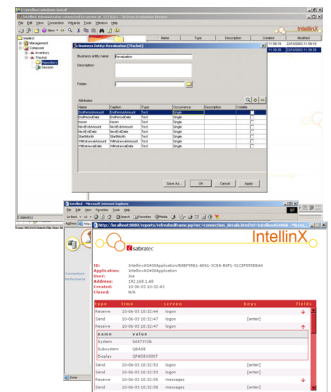
While other solutions operate by simulating actual work or by post-mortem analysis, **INTELLINX** tracks actual user activity in real-time thus providing more accurate and more up-to-date results.

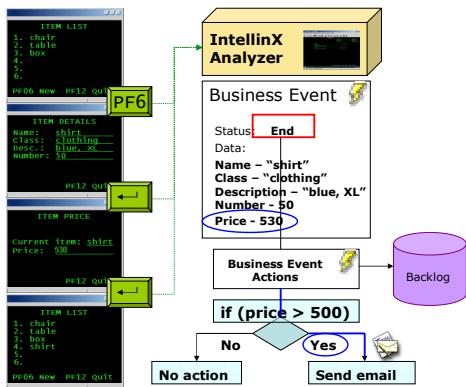
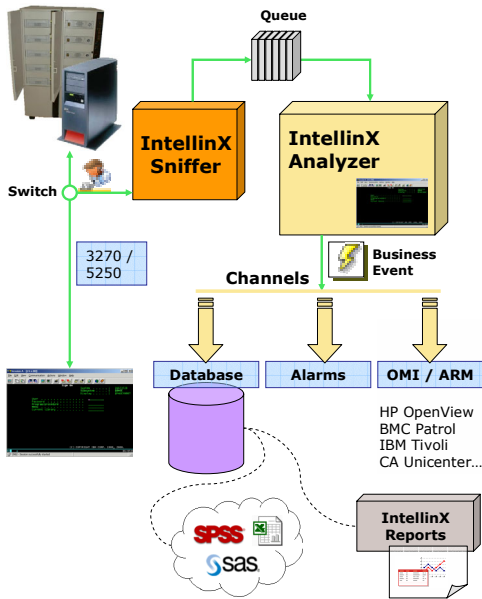
#### Completely Reliable

While other solutions hook into application code, **INTELLINX** operates in a completely non-invasive zero-footprint manner by seamlessly sniffing screen communication between application and end-user.

#### Easy to Implement

While other solutions require costly and lengthy adjustments and modifications, with **INTELLINX**, there is no need to modify applications, reconfigure clients, or install any software on host. Simply plug IntellinX to the network, either use IntellinX out-of-the-box or define business events to be monitored, and view results.





## How does INTELLINX's Intelligent Monitoring work?

### IntellinX Sniffer

INTELLINX seamlessly intercepts actual screen communication between applications and end-users. Using standard sniffing via mirror port of a communication switch, interception is completely transparent to both application and end-user and has no effect or footprint on application's flow and response times.

### IntellinX Analyzer

By employing advanced pattern-recognition methods, relevant legacy services, screens, fields, flows, and other application entities are automatically located and identified. These entities are then mapped into meaningful business indicators, using an easy-to-use point-and-click graphic visualizer. When such an indicator is tracked during monitoring, a corresponding business event is flagged, triggering a pre-defined action. Application entities, business indicators, and business events definitions are managed in a repository and can be easily tested and maintained.

### IntellinX Reporting

INTELLINX allows full flexibility in reporting and alerting based on monitored data and predefined business events:

- Open Reporting Architecture
  - Open connectivity to leading BI and reporting products (SAS, SPSS, Excel, OLAP).
  - Open connectivity to BPM tools (BMC Patrol, CA Unicenter, IBM Tivoli, HP Openview).
- INTELLINX's repository is managed in a standard database thus it is completely accessible to any external product.
- Native business event and exception alerting in real-time.
- INTELLINX Reporting services.

### IntellinX Out-of-the-Box

INTELLINX allows immediate monitoring upon product installation with no customization or business event definitions. In such mode, IntellinX records all application activity and automatically identifies meaningful fields and other application entities. The recorded activity can be later replayed, analyzed, and reported.

## About Sabratec

Sabratec is the leading provider of rapid legacy integration and monitoring solutions. Deployed at more than 200 customers worldwide, Sabratec's products are easy to use and do not require writing of any code or modification of legacy assets.

The company focuses on downsizing complex legacy integration and monitoring projects into a short-term and cost-effective task. With Sabratec's solutions, such projects can be completed in a matter of a few weeks, or even a few days, and do not require special training.

Sabratec's worldwide customers include large corporations such as GE Capital, First National Bank, Ricoh, Swiss Re, Brazil Telecom, Telemar, RTVE, and many others.

For further information, please contact us:

**SABRATEC Technologies, Inc.**  
 156 William St.  
 Suite 806, New York City  
 NY 10038, USA  
 Tel: 212 513 0977  
 Fax: 212 513 0979  
 Toll-Free: 1 877 88 SABRA

**SABRATEC Ltd.**  
 3a Yoni Netanyahu St.  
 Or-Yehuda 60200  
 Israel  
 Tel: +972-3-538-8399  
 Fax: +972-3-634-9230

**SABRATEC on the Web:**  
<http://www.sabratec.com>,  
[info@sabratec.com](mailto:info@sabratec.com)

